

HEATECH - QUICKMAT

INSTALLATION INSTRUCTIONS

GENERAL

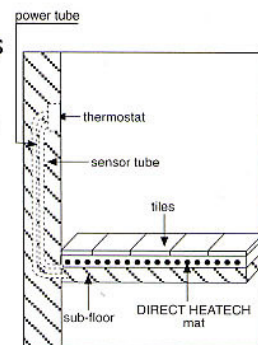
1. Read instructions carefully.
2. DIRECT HEATECH floor heating mats can be installed under ceramic floors, stone floors and wooden floors over concrete and must not be installed in closets hanging on wall, wall partitions that extend to the ceiling or over cabinets.
3. DIRECT HEATECH can be installed in all rooms, including in bathrooms.
4. Make sure that the sub-floor is complete, including insulation if necessary.
5. No modifications are allowed to be made on the product.
(Size change, fixing cutting cable, connections, etc)

Preparations

1. All preparations are essential to ensure peak efficiency.
2. Remove all obstacles from sub-floor and make sure that sub-floor is free from all dirt, nails, sawdust etc.
3. Pre-plan the heating mats layout, thermostat location.
4. Make sure the heating mats sizes are correct as you need according to the plan.
4. If DIRECT HEATECH is installed under ceramic or stone tiles allow at least one week for the mortar to cure, or according to manufacturer's specifications, before activating the system.

Electric preparation-to be done by a qualified electrician

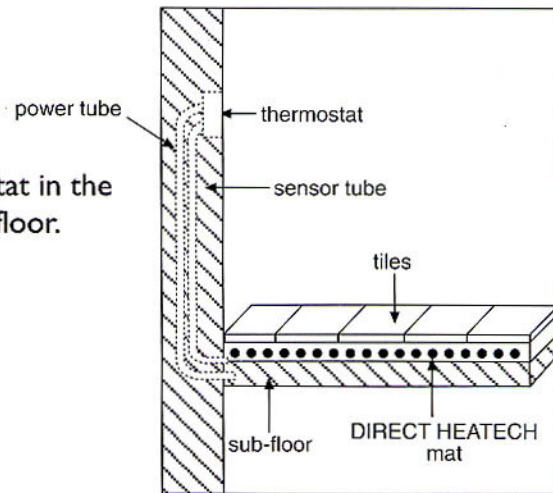
1. Prepare all electric connections for the thermostat in the walls (see drawing no 1)
2. It is mandatory to install a class "A" non -receptacle G.F.C.I. circuit breaker with each DIRECT HEATECH installation.
3. Install the thermostat according the installation instruction of the thermostat.



Warning: make sure the heating mat is not connected to the electric power and the electric circuit is deenergized during the installation to be safe from fire and electric shock

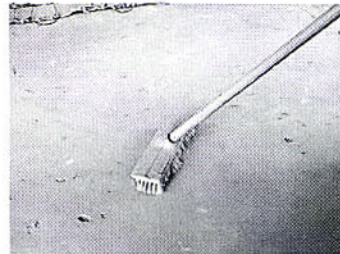
Direct heatech Installation steps

1. Mark the location of the thermostat in the wall, the sensor and tubes in the floor.

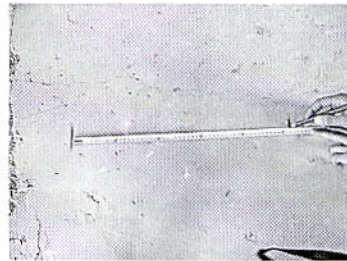


2. Have the qualified electrician begin the electrical preparation noted on the front of the brochure.

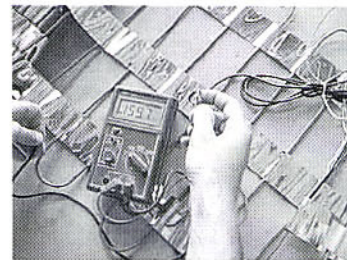
3. Clean all installation areas with a broom.



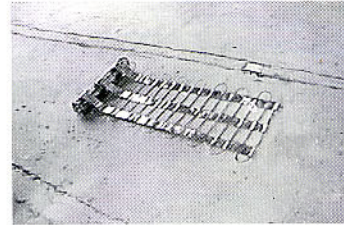
4. Mark the locations of the heating mat on the sub-floor according to the planning layout, using a marker or a chisel .
Make sure that the heating mat does not extend beyond the room or area in which it originates.



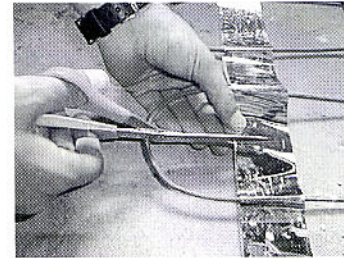
5. Test no 1: Test the heating mats before rolling them out, with an ohmmeter.
All results should agree with the test tag + 10%
if you measure an open circuit then call us



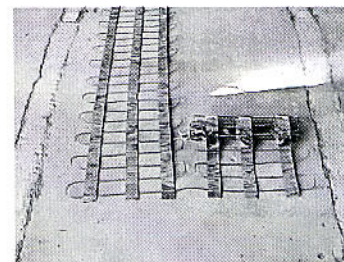
6. Place the DIRECT HEATECH mat at the marked area and roll out according to the plans.



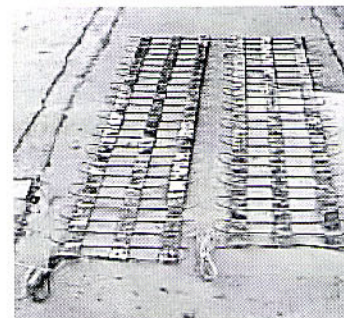
7. When reaching where the mat needs to be turned cut the strips of the heating mats with a scissors, from the cable ring onwards.
NOTE: Look at end of installation instructions for alternative cutting options.



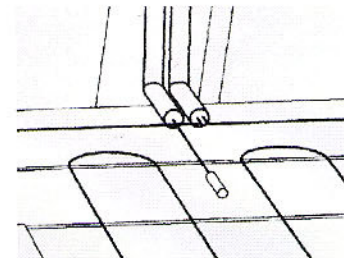
8. After cutting DIRECT HEATECH strips turn around the heating roll and make sure that the spacing between the cable is not less than 1.9 in.



9. Proceed with the layout according to pre-plan and make sure that the spacing between the cable is not less than 1.9 in.



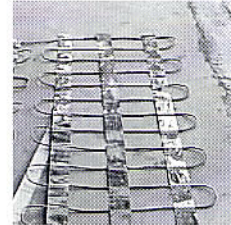
10. Thread the non-heating lead (green, white ,yellow or red) wires through the tube in the floor that lead to the thermostat and install the sensor in the second tube.



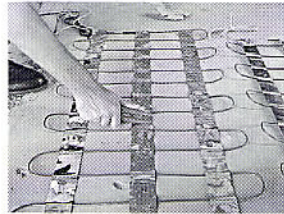
11. Remove the glue's protection tape from the beginning of the layout area



12. Commence by removing middle strip and then side strips.



13. Make sure that all glue strips are well glued down by using a roller.



14. Test no.2: Test according to step no.5.

15. Tile your floor, Be careful not to damage the heating cable and make sure that the self leveling on top of the heating wire is 1/4" in or more.

16. A QUALIFIED ELECTRICIAN MUST CARRY OUT STEP NO.16.

Test no.3: Test according to step no.5 and install thermostat according to Installation instructions.

17. Before running the system make sure you have completed the preparation instructions step no 4.

18. Switch on all the circuit breakers and mark on the circuit breakers a label indicating the floor heating area names.

19. Switch on the thermostat according to the thermostat instructions.